



**Third Floor**  
**65 Westgate Road**  
**Newcastle upon**  
**Tyne**  
**NE 1 1SG**

**382 sq. ft.**

### Monthly Suite Charges

- Rent: £323
- Service Charge: £198
- Total: £521

*All costs are inclusive of VAT*

### Additional Costs

- Key Deposit: £25
- Door Sign: £30 (+VAT)

### More than office space...

Explore this brochure to learn about the great service and added value you get with a North East Workspace office.



 0191 230 6400

 [workspace@pne.org](mailto:workspace@pne.org)

 [northeastworkspace.co.uk](http://northeastworkspace.co.uk)



## Tenancy includes:

- Easy in, easy out terms
- 24-hour access
- Alarm and door security
- Energy and waste costs
- Servicing of common areas
- Secure bike sheds
- Bike shed showers

## Optional extras:

- Superfast broadband
- Access to parking
- Business advisor services

## Committed to sustainability

North East Workspace are strongly committed to minimising our environmental impact, continuously reviewing how to reduce our footprint. For example, our sites:

- 100% of energy generated through our own, on-site solar panels
- Achieve 85% recycling of waste
- Offset carbon use by planting trees in our own woodland

 0191 230 6400

 [workspace@pne.org](mailto:workspace@pne.org)

 [northeastworkspace.co.uk](http://northeastworkspace.co.uk)

## Meet the team

Our dedicated team are based locally, at our Pink Lane offices and are on hand to help when you need them.



**Lisa Murphy**  
Workspace Manager

[lisa.murphy@pne.org](mailto:lisa.murphy@pne.org)



**Steven Miller**  
IT and Infrastructure

[steven.miller@pne.org](mailto:steven.miller@pne.org)

 0191 230 6400

 [workspace@pne.org](mailto:workspace@pne.org)

 [northeastworkspace.co.uk](http://northeastworkspace.co.uk)

## Testimonials



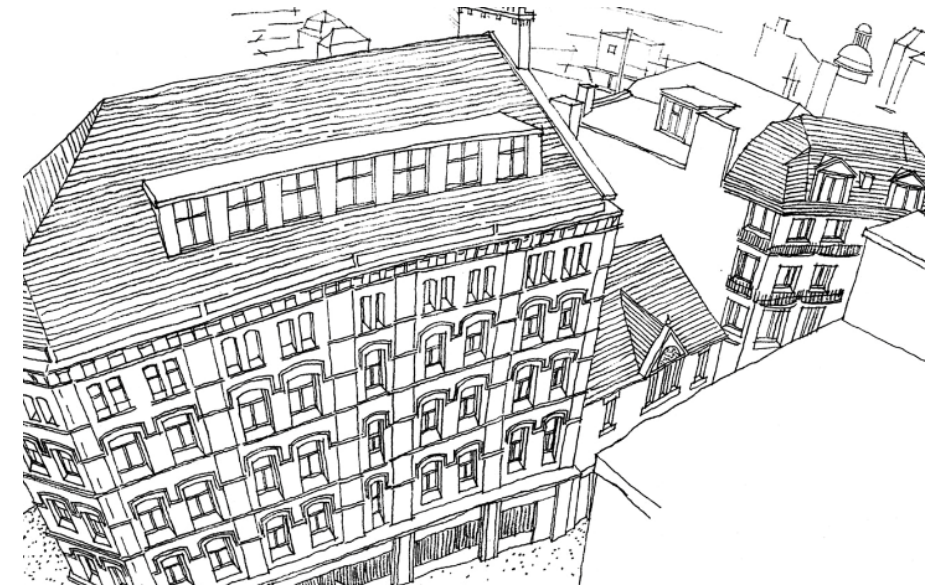
"As a long term tenant of North East Workspace I have found them to be extremely supportive in helping me establish and grow my business."

**Ash Zahid, Durham Businesswear**



"From setting up our first offices to expanding into bigger facilities they were there to help. In business, every supplier can have an effect on how you operate. Having a good landlord makes this easier and nicer."

**Steve Bainbridge, Beatsuite**



 0191 230 6400

 [workspace@pne.org](mailto:workspace@pne.org)

 [northeastworkspace.co.uk](http://northeastworkspace.co.uk)